

NEURO4J STUDIO – INSTALLATION GUIDE



PDF version available online at <http://static.neuro4j.org/download/doc/studio/StudioInstallationGuide.pdf>

INSTALLATION STEPS

Neuro4j Studio is based on Eclipse (see <http://www.eclipse.org>).

GET FROM DOWNLOAD PAGE

Latest version of Studio is available on Download page (<http://neuro4j.org/download>)

BUILD FROM SOURCE

Neuro4j Studio is open source project on GitHub. <https://github.com/neuro4j/studio>.

To build Studio from source follow these steps:

- get source code from Git repository (git clone <https://github.com/neuro4j/studio.git> studio);
- install [Apache Maven](#) version > 3.0;
- run “mvn install”;
- eclipse product will be available in folder `./product/target/products/`;

INSTALL PLUGINS FROM UPDATE SITE

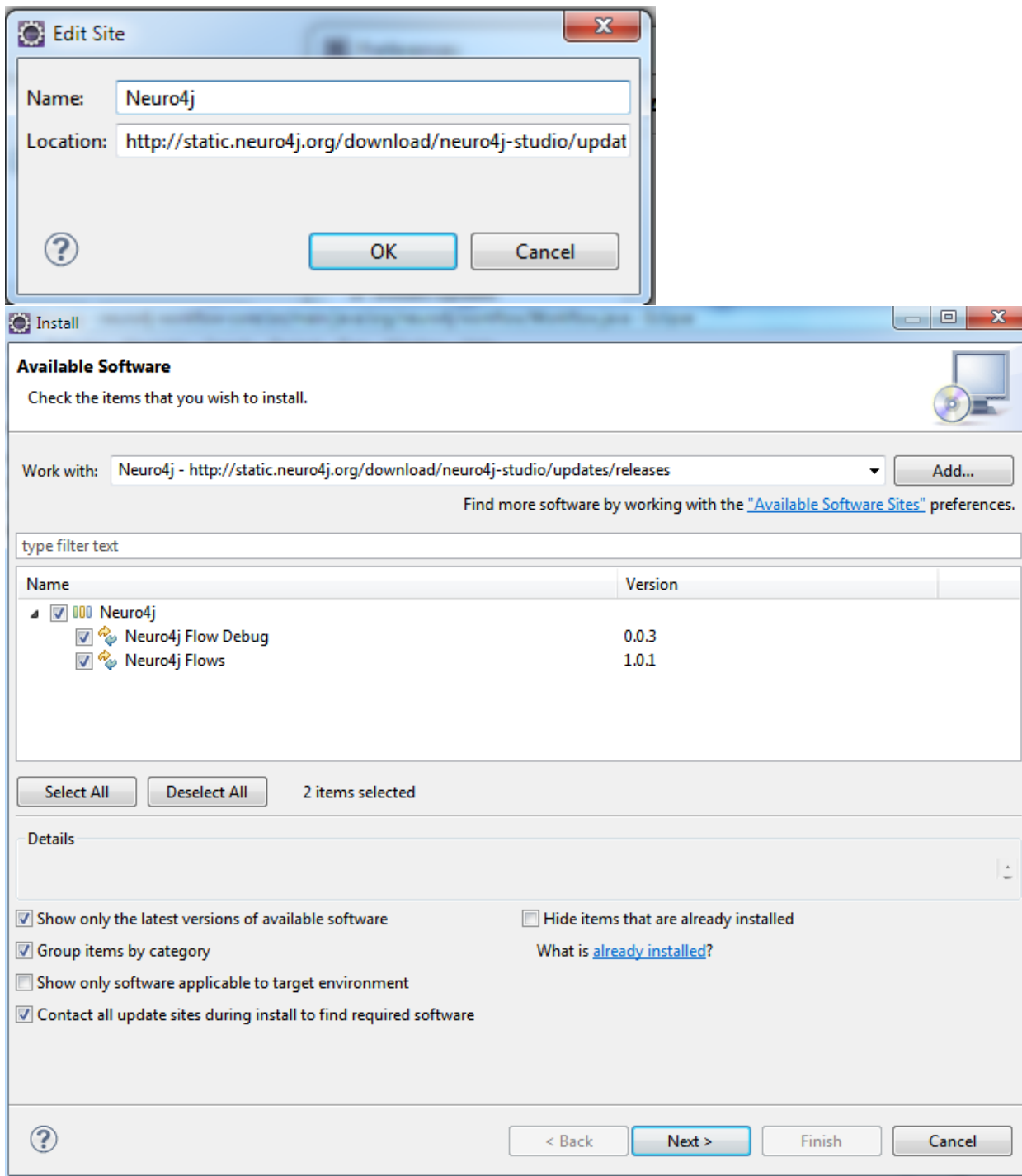
To install Neuro4j Studio follow these steps:

INSTALL ECLIPSE KEPLER FOR JAVAEE DEVELOPERS

- 1) Download and unzip [Eclipse Kepler for Java EE Developers](https://www.eclipse.org/downloads/packages/eclipse-ide-java-ee-developers/keplersr2) <https://www.eclipse.org/downloads/packages/eclipse-ide-java-ee-developers/keplersr2>

INSTALL NEURO4J FLOW EDITOR

- Click Help->Install New Software
- Add new repository with location:
<http://static.neuro4j.org/download/neuro4j-studio/updates/releases>



- 2) Click Next->Finish;
- 3) Re-start Eclipse;
- 4) Open perspective “Neuro4j Flows”;

